

SAFETY SIMULATOR GUIDE

Simulate Construction work place accidents and demonstrate the potential for injuries.



YouTube

Our ACSEL series safety simulator machines can contribute to safety in the Construction Industry.

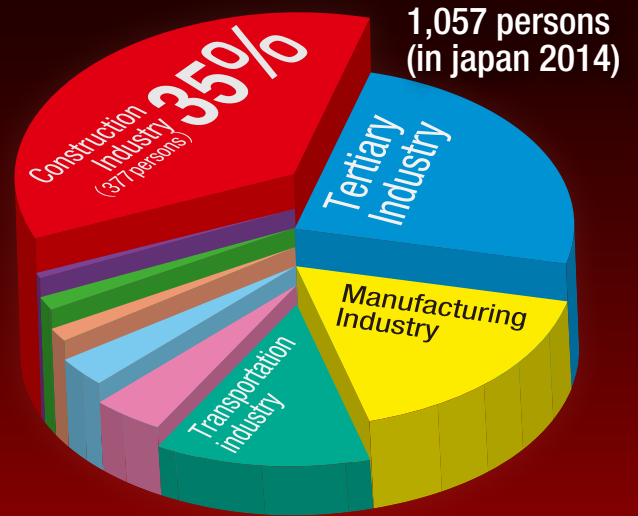
<http://asia-create.jp/en/index.html>

Construction Industry workplace accidents in Japan.

Number of fatalities in the construction industry over a 10 year period.
(in japan 2005-2014)

4,060
Persons

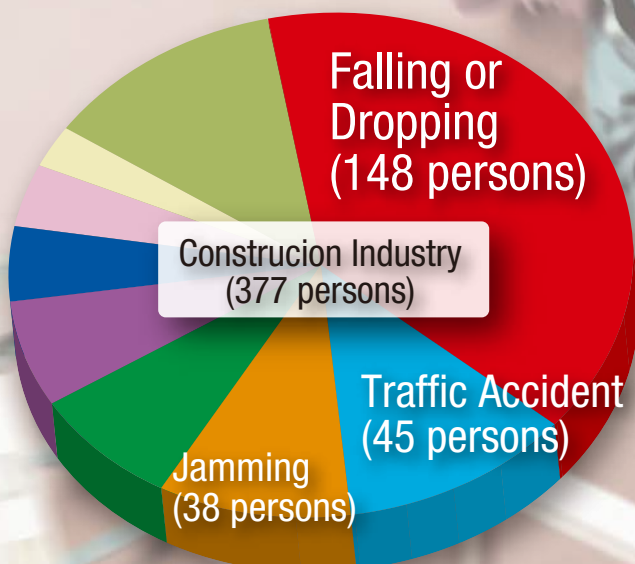
Number of fatalities for all industrial workplace accidents



Source: Workplace accident report (2014) by Japanese Ministry of Health, Labor and Welfare

The number of fatal workplace accidents in the Construction Industry is higher than for other industries. Considering that the Labor percentage of the Construction Industry is about 10% of the entire industrial work force, the fatality ratio of 35%(377 persons) in the Construction industry is an abnormally high figure!

Type of Fatal Accidents in the Construction Industry(2014)



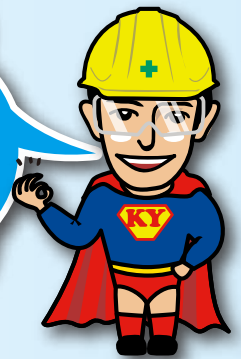
Most of the fatal Accidents in the Construction Industry are due to falling or dropping from a work stage or scaffolding. In addition, the number of jamming Accidents are also increasing.

SAFETY SIMULATORS

Our ACSEL safety simulators are installed at on-site locations which enables companies to provide their staff with superior in-house training and a greater awareness of workplace safety which, in turn, helps to reduce the number of workplace accidents and create a higher level of worker confidence.

BENEFITS OF USING SAFETY EXPERIENCE SIMULATORS

Improve awareness and remind us of dangers
Create a safer workplace, avoid accidents and reduce mistakes
Workers feel more confident and thus more productive
Reduce production capacity losses



SAFETY TRAINING

Lecture

+

Hands-on

Our safety training center based in Toyokawa offers safety training seminars using more than 30 unique types of Safety Simulator.

Our intensive half-day seminars help workers to realize the necessity of improving their overall safety awareness and remind them of potential workplace dangers.



Dropping and Falling Workplace Accidents

Construction Industry
workplace accident

5,941

times / year

(in Japan 2015)

Number of fatalities

148

Persons

(in Japan 2015)

The most common types of fatal construction industry work place accidents are Dropping and Falling, which represent 40 % of the total number of workplace incidents. Working on elevated platforms, which are commonly used in the construction industry, often leads to Falling and Dropping accidents.

While higher levels present an increase in danger, we should also take care even at lower levels.



Elevated Workplace Accident Simulator

ACSEL 5060



**Have you ever had this type of
“Hiyari-hatto” experience before?**

*ex. The worker is disconnecting one of the bars,
losing his balance and potentially falling.*

Note: “Hiyari-hatto” means unexpected accidental event

Stairway Slipping and Falling Down Simulator

ACSEL 5040



! Have you ever had this type of **“Hiyari-hatto”** experience before?

ex1. I climbed down the stairs without looking where I was going, and almost lost my footing.

ex2. I lost my balance on stairs and fell over because I wasn't holding onto the handrail.

Unsteady Stepladder Accident Simulator

ACSEL 5050

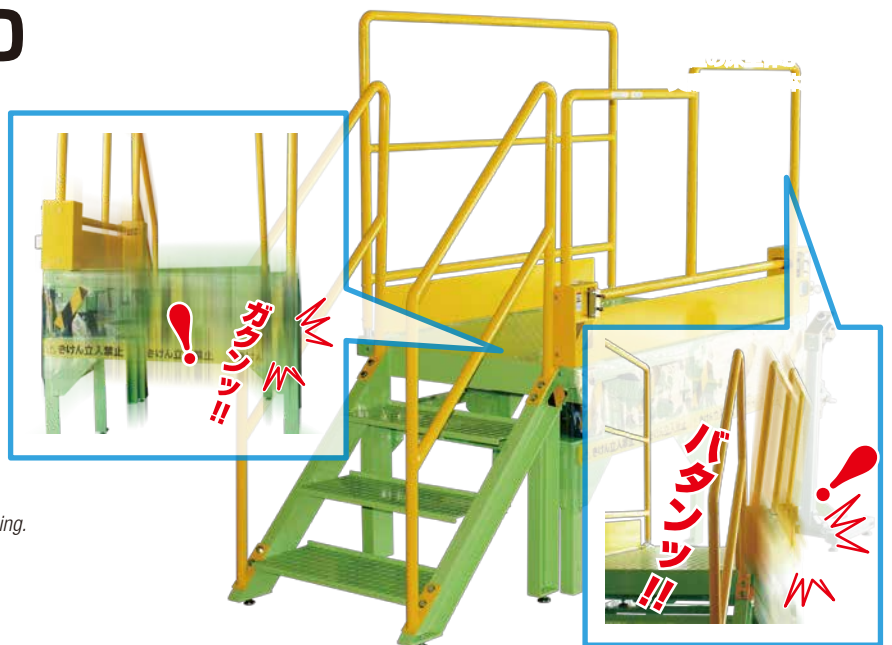


! Have you ever had this type of **“Hiyari-hatto”** experience before?

ex. The hinge is not locked so the stepladder may collapse without warning. The stepladder is on an uneven surface and becomes unstable.

Work Platform Accident Simulator

ACSEL 5110



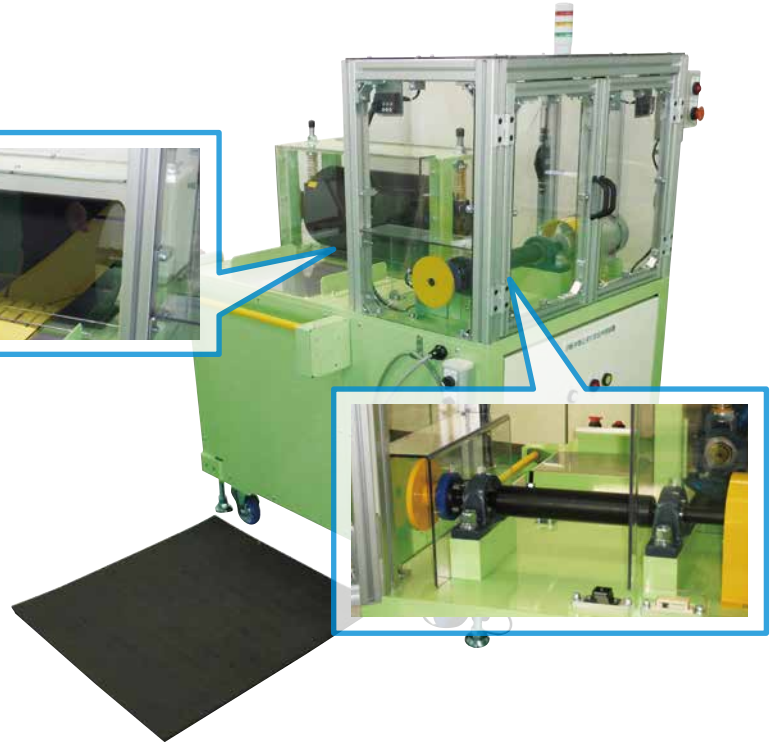
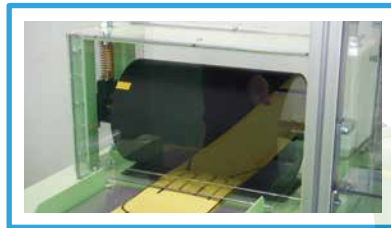
! Have you ever had this type of **“Hiyari-hatto”** experience before?

ex. The hinge is not locked so the stepladder may collapse without warning. The stepladder is on an uneven surface and becomes unstable.

Jamming / Rotating Workplace Accidents

Rotating (Multiple) Jamming Accident Simulator

ACSEL 1010



Have you ever had this type of “Hiyari-hatto” experience before?

ex. While working with a printing machine, foreign substance was found on the roller and while the rollers were still moving, the operator attempts to remove the substance nearly has their hand caught.

Vee Belt Jamming Accident Simulator

ACSEL 1020



Belt conveyor Jamming Accident Simulator

ACSEL 1090



Have you ever had this type of “Hiyari-hatto” experience before?

ex1. I chased a passing defective product too far while performing sorting work on a conveyor, and I almost got Caught up.

ex2. I cleaned the conveyor without stopping the machine, my cloth became caught, and I almost got caught up in the conveyor



Have you ever had this type of “Hiyari-hatto” experience before?

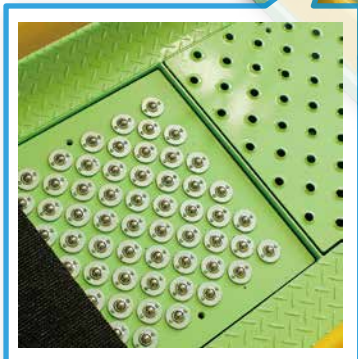
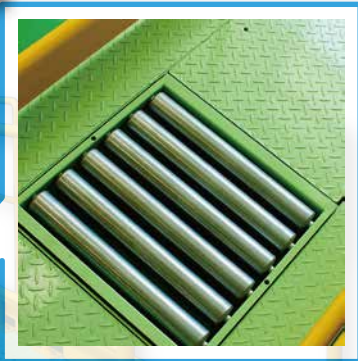
ex1. An operator, who tried to conduct maintenance without turning off the power, got their glove jammed in the machine.

ex2. An operator tried to stop a Vee belt with their hand, and their hand got caught in the coasting Vee belt.

Dropping and Falling Workplace Accidents

Slipping and Falling Down Simulator

ACSEL 5030



Safety Shoes Accident Simulator

ACSEL 2050



Have you ever had this type of "Hiyari-hatto" experience before?

- ex1. Accidentally stepping on a roller surface, a person slipped and fell down.
- ex2. Accidentally stepping on a nut left on a path, a person slipped and fell down.

This device simulates the effectiveness of wearing safety shoes when a worker drops heavy items onto their feet.

Pointing and Calling Procedure Simulator

ACSEL 5010&5020

The device allows people to experience the effectiveness of pointing and calling procedure by showing the differences in the accuracy ratios when operation is conducted with/without the pointing and calling procedure.



Standard



Light

CONTACT

Phone: +81-533-84-5581
Fax: +81-533-84-5585
Web site: <http://asia-create.jp/en/index.html>
Office Hours: Mon-Fri: 8:00 am to 5:00 pm

Enquiries in English: Mr Kunio Sato
[sato-k8@asia-create.jp]

Enquiries in Chinese: Mr Satoshi Hiramatsu
[s-hiramatsu@asia-create.jp]



ASIA CREATE

Asia Create Co.,Ltd
7-11-15 Zoushi
Toyokawa Aichi
442-0842
Japan

KEY INFORMATION

Established: 1988
Capital: 15 million yen
Annual Business: 700 million yen
No. of Employees: 30
President: Mr Kunio Sato



ISO9001



ACSEL